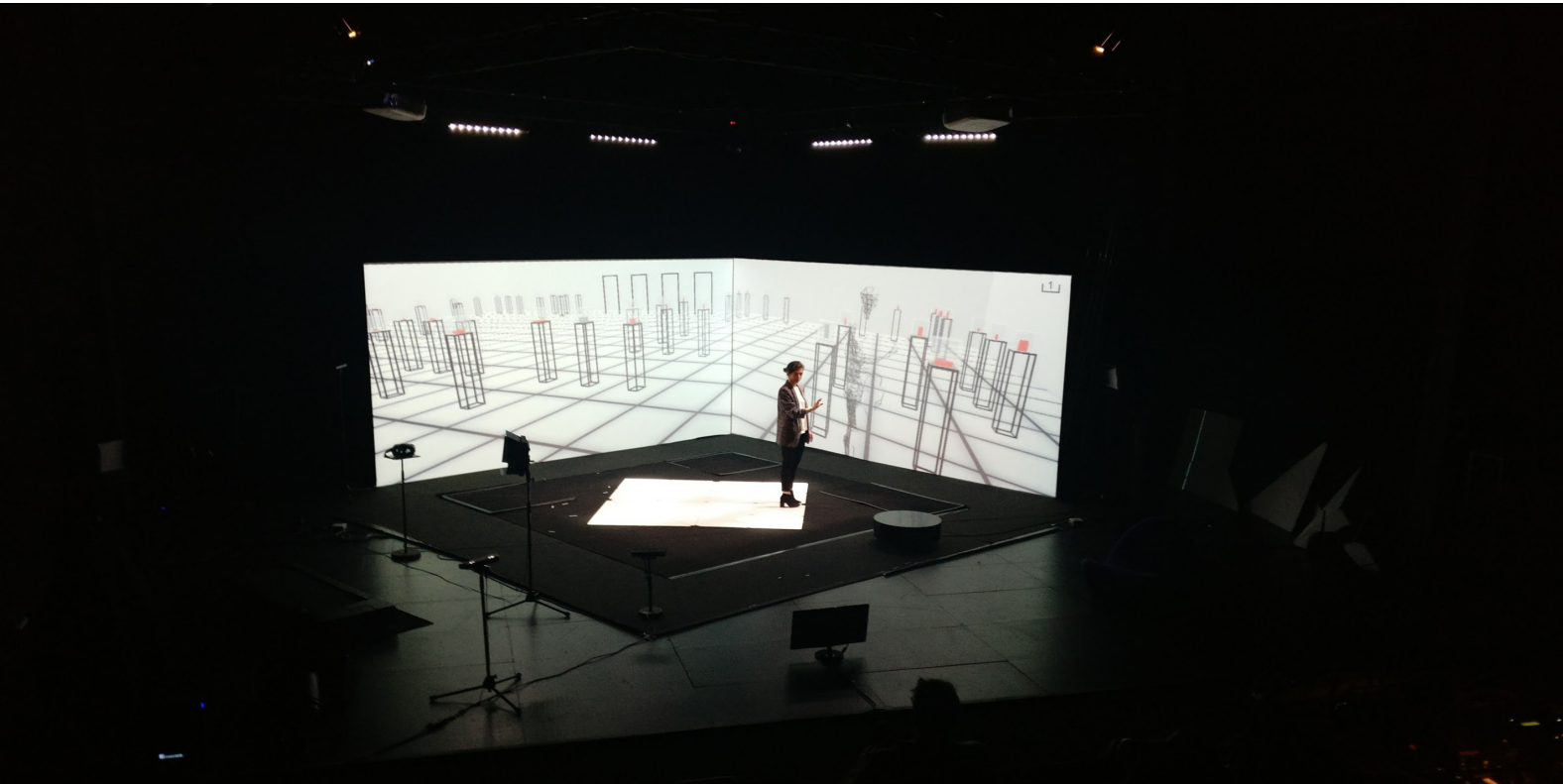


#Softlove

Co Le Clair-Obscur / Frédéric Deslias

Technical Rider



Show duration : 1h15

Contact Crew :

STAGE :

Emmanuel Sabroux
e.sabroux@outlook.com
+33 6 32 46 00 74

SOUND / VIDEO :

Ema Palumbo
Palumbo.vincent@gmail.com
06 15 16 10 45

LIGHT AND LOCATION MANAGER :

Quentin Pallier
pallier.quentin@gmail.com
06 31 70 26 11

LOGISTIC - DIFFUSION

AADN – Cyrielle Tissandier
diffusion@aadn.fr
06 77 61 15 81

DIRECTION :

Frédéric DESLIAS
leclairobscur@gmail.com
06 80 57 38 37

This rider is translated from the french, do not hesitate to inform us if any term sounds strange or hard to understand in english. Thank you for your understanding.

STAGE SPACE AND SET

Space required :

Width 10m
Depth 10m
Height 5m

Minimal space possible (light version) :

Width 7m
Depth 7m
Height 3m75

Black mat floor

The set is composed of (see diagram page 8) :

- A play space made of fireproof black carpet M1 of **6mx6m**, placed in diamond;
- 2 PVC screens M1 of 5m30x2m65 stretched on alu frame, and **square placed**, laid down on the floor and crutched, or suspended at 1m of the floor, depending on the configuration of the stage ;
- The furniture if made of an origami of white dibon plates, also M1.

Above, a structure of square alu truss, of 6mx6m (300mm) is suspended to the grill (the bottom of the structure ideally at 5m).

- A treadmill, a rotating plate, a Pantone chair, a Pierre Paulin armchair are placed on this space, as well as several informatic components (computer, kinect cameras, back screen...), and several stands (light and sound).

A few foods are also used as accessories.

To be provided by the organisator

- The hooks for the structure, as priory defined (on fly bars or motors) as well as 6 lifting slings (minimal 1m). This structure support lights and 2 video-projectors (total weight : aproximatly 320kg);
- 8 rotary collars 50mm for fly bars;
- *4 thin black lifting slings of 1m50, to hang the screens (20kg).*
- A „black box“ (black back + black curtains). Black floor (painted or dance mat, already in place for the assembling);
- 1 dressing room for the actress, with shower, possibility to make a « quick dressing room » on the stage (table, chair, rack, mirror), towel for the actress, catering (hot and cold drinks, biscuits and fresh fruits for 4 people.
- washing machine, drying machine and ironing board.
- Prepare a table (minimal 3m) for the management booth + black taps +3 computer chairs +3 desk lamps
- Prepare a black bar stool for the set
- 1 vacuum

The stage and the grill must be clean and free of all material for the beginning of the assembling.

Transport :

the set is transported location truck of **12m3 from Caen**, since D-2.

Thank you to inform us if there are any difficulties for acces (limited height for the passage of the vehicule, lift...) or any element impacting the assembling schedule.

ASSEMBLING SCHEDULE

(CONTACT US)

D-2 Set transportation – arrival of the technical crew at D-2 evening (please schedule for sleeping)

D-1 Assembling

		Stage technician	Light technician	Sound / Video technician	Dresser (to define on case-by-case)
D-1 9h 13h	Assembling	1	1	1	
D-1 14h 18h	Assembling + light adjustments	1	1	1	
D-1 20h 23h (if needed)	Sound/ Light Video calibration		1	1	
D 9h 13h (if needed)	Technical rehearsal		1	1	(1)
D 14h-18h	Adjustments / Rehearsak		1	1	
D 20h	Show		1	1	
D 21h30 24h	Dysassembling	1	1	1	

SOUND

Palumbo Vincent

Palumbo.vincent@gmail.com

06.15.16.10.45

The sound of the show (recorded music, off voices, live voices from the stage) is mixed on live, in multi diffusion by Ableton LIVE / Ableton live sequence network sound/light/video.

Materials provided by the company :

- Computer + Midi controller + sound card Motu Ultralite (2in XLR/8out jack);
- Wiring to sound desk (XLR);
- 1 singing microphone SH51

To be provided by the organiser :

- **1 front line** adapted to the theater's size, with a support for the front and back sieges if needed, central speaker if necessary (off voice);
- **1 sub line**, if possible apart from the front line, in accordance with this one;
- **1 back line on cube**, type Amadeus MPB600 or PMX12, L-Acoustics MTD 112 or 12XT, Nexo PS15..., preferably coherent with the front line;
- **2 monitors**, type PS10, en wedge;
- **2 Clusters or satellites** on public side, type PS10 ou 108XT (depending on the configuration of the room)
- The amplifiers, processors and cables adapted to the system;
- **1 numeric sound desk type Yamaha 01V96 with** EQs and delays out, **8 in** « line » **and 1 in "microphone" 48V**, and the number of out matching the number of speakers;
- **1 tie-Micro HF color flesh type DPA4061 (discret) or black to hide in the hairs / transmitter small size (Type Shure UM1n / to slide under the bra (part danced on the floor).**
- **XLR cables / various Adaptors.**

Notes :

The management booth must be on public side !!!

In case of absence of the required materials, thanks to contact us quickly, so that we can find, if possible, an alternative solution.

Other :

- Provide **9 black microphone stand : of which 3 small stands** and **3 straight stand with embase**

(for 3 kinect cameras / 3 LedPanel / 2 set elements / 1 SH51)

Staff :

1 sound technician.

VIDEO

Palumbo Vincent

Palumbo.vincent@gmail.com

[06.15.16.10.45](tel:06.15.16.10.45)

The video of the show is generated in live, or spread from a PC on the front left stage. The control display and the keyboard and mouse are reported on management booth through 3 network wires RJ45. 3 kinect cameras on stage do motion capture. 2 video projectors project on 2 screens hanged of squarely.

Materials provided by the company :

- Computer **PC** (on stage) 4 out + adaptators display port to VGA or HDMI;
- 1 display for backing + VGA cable;
- 1 control display + keyboard + mouse + extender;
- **4 Kinect cameras** + power+ USB cable;
- 3 RJ45 cables of 50m;
- 1 network switch + 2 short RJ45 cables;
- Midi cable for link with light control.

To be provided by the organisator:

- **2 videoprojectors Full HD** 6500 lumens, focal length 0.8 linked to the PC (front left)

(We have 2 « spiders » with hooks from BS SUP50VP/A, if this wouldn't fit, provide 2 « cradles » (to hang the video-projectors).

- Provide **2 HDMI cables**

o
f

20m

or 2 transmitter/Receiver HDMI type Blackmagic HD-SDI + coaxial Cable, from the computer (front left) to the VP.

/ We have 2 VGA cables of 20m in spare, but the VGA is often a source of problems with the HD resolution.

- **2 Shutters Vp DMX**
- **1 small table on front left**
- 1 power line one the floor (front left) + multi-socket + cables and inverter.;
- 1 Control screen with HDMI connection

Notes :

In case of absence of the required materials, thanks to contact us quickly, so that we can find, if possible, an alternative solution.

Staff :

1 video technician (the sound and video technicians can be the same person, since our technician manage both)

Lights

Quentin Pallier

pallier.quentin@gmail.com / 06 31 70 26 11

Material provided by the company :

Square alu truss of 6m/6m

Suspended :

- 3 spotlights Wash led (Ayrton Nando Beam S3);
- 1 Martin MAC 250+;
- 4 T10 DMX Led White 7000K;

On the floor :

- 3 LedPanel 12v;
- 2 Ribbon Ledstrip 12v 4m + alu profil;
- 2 Dimmer DMX 4x12v on stage left and right;
- 1 rotating plate ;
- 1 Splitter DMX.
- 1 Treadmill
- 1 Rack Neon Graduable 120cm

Light Control :

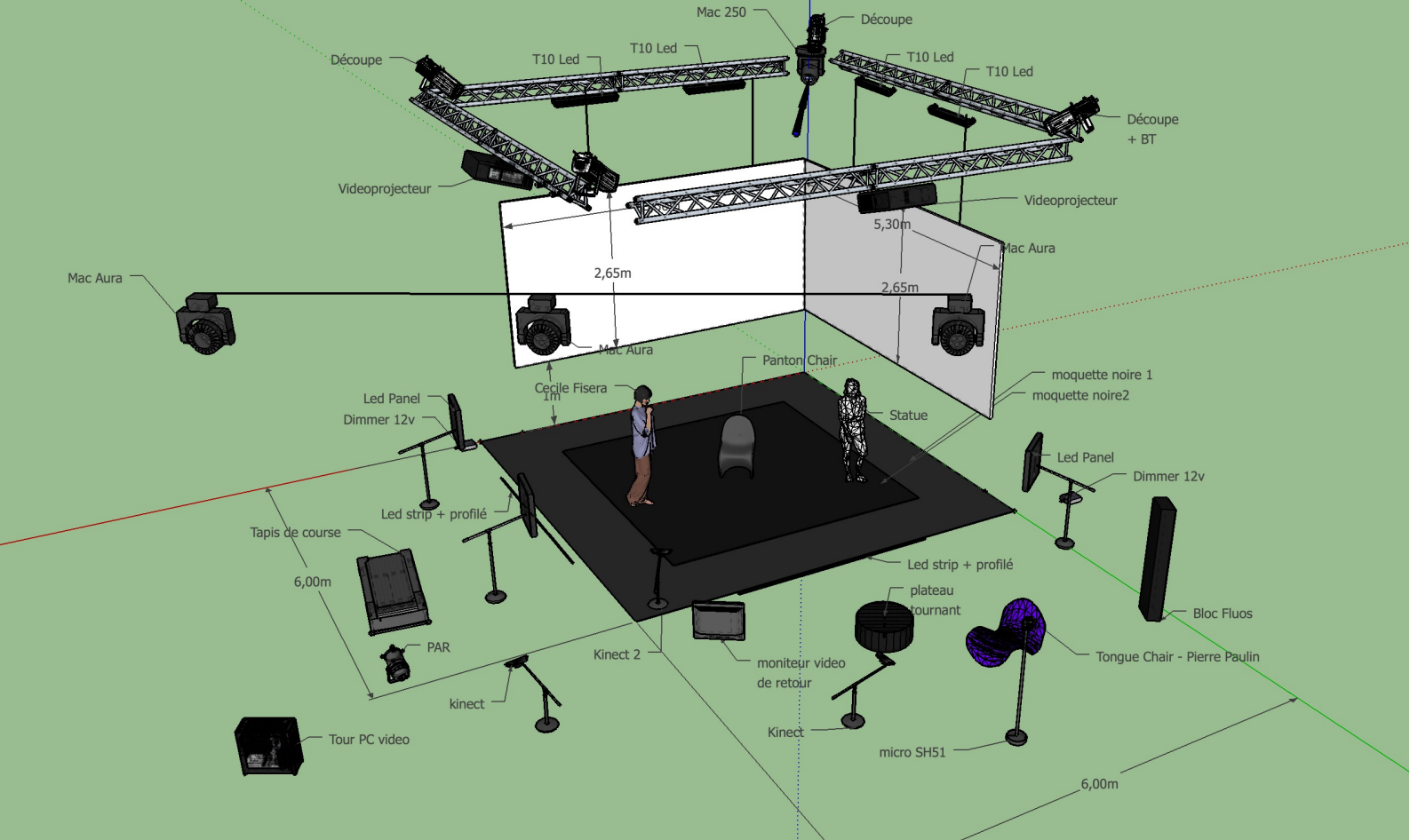
- 1 laptop (GrandMA2) + [MA onPC command wing](#).

To be provided by the organisator :

- 24 graduated lines;
- Front truss or fly bar;
- 4 profile spots 613 SX (Juliard or equivalent);
- 1 Low-voltage projector 500w ou 250w;
- 2 pars CP60;
- 1 floor plate;
- 1 F1 ;
- 2xF1 or 1 PAR (used as a charge for the turning plate);

- Public light, controlled from the light controller;
- Circulation lights for the backstage/wings, invisible from the public;
- Filters Lee 711 format 613sx (x2), Par 64(X1) and format BT (x1), roscoe 119 format BT (x1) and 613 (X4), lee 106 format PAR (x1);

- Electric cables, Multi-sockets....
- DMX 3 points and 5 points, Adaptators DMX 3/5 5/3 ;
- 2 power lines on the left floor, and 2 graduated line;
- 1 power line on the right floor, 2 graduated + charge;
- 1 Control screen with HDMI connection



3D model + Light plan