

# EARTHSATZ

Dylan Cote & Pierre Lafanechère / LIVE AV





## Dylan Cote & Pierre Lafanechère

Dylan Cote and Pierre Lafanechère are two media artists and designers based in Paris. They are mainly working on moving images, sound and installations, in order to tell a story, establish a specific atmosphere, create a sensitive experience, according to an idea, a project, a moment.

This process includes the music field which they are very active within (live visual, stage design, music video...). They work with music events and international electronic music artists, such as Manu Le Malin or Möd3rn.

They also pursue more personal visual researches by experiencing and diverting various techniques from their proper use, using the aesthetic potential of new media. Through motion design, code, sound creation, installation or light, they strive to set up poetical and critical spaces. It creates fragments of fiction which give us a view on current issues of techno-social changes.

They are members of the OYÉ visual art label. Created in 2015, it brings together artists and designers around projects related to digital art.

### Selected works :

<http://dylancote.fr/>

<http://incogito.fr/>



### References

2021/ **Galerie Suzanne Tarasieve** / exhibition  
2021/ **IMAL Bruxelles** / art residency  
2021/ **London Design Festival (V&A museum)** / exhibition  
2021/ **HardDiskMuseum** / exhibition  
2021/ **SAT Montréal** / art residency  
2021/ **CodePlus Festival** / exhibition  
2021/ **Festival Interstice** / AV live  
2021/ **Musée de Soissons** / exhibition  
2021/ **Festival Astropolis** / live visual  
2021/ **Festival Atmosphère** / exhibition  
2021/ **Glazart** / art residency

2020/ **Mutek Connect** / live visual  
2020/ **CADAF Art Fair** / exhibition  
2020/ **Festival International de la Imagen** / AV live  
2020/ **La Machine du Moulin Rouge** / live visual  
2020/ **Beside the Screen Festival** / exhibition  
2020/ **Harddisk Museum** / exhibition  
2020/ **EP7** / exhibition

2019/ **La Gaité Lyrique** / exhibition  
2019/ **IMAL Bruxelles** / AV live  
2019/ **Inasound Festival** / AV live  
2019/ **Galerie Glassbox** / exhibition  
2019/ **Villa Béatrix Enea** / exhibition  
2019/ **Festival Astropolis** / live visual  
2019/ **SMAC La Belle Électrique** / live visual  
2019/ **Grandes Serres de Pantin** / exhibition  
2019/ **Le Puzzle** / exhibition  
2019/ **Festival Electrochoc** / exhibition  
2019/ **Le Yoyo** / live visual  
2019/ **Fu:bar Festival** / AV live  
2019/ **Friche Belle de Mai** / live visual  
2019/ **SMAC La Rodia** / live visual  
2019/ **Main d'Oeuvre** / live visual

2018/ **Festival Scopitone** / exhibition  
2018/ **Nuit Blanche** / AV live  
2018/ **Dour festival** / AV live  
2018/ **Festival Collision** / art residency



# Earthsatz

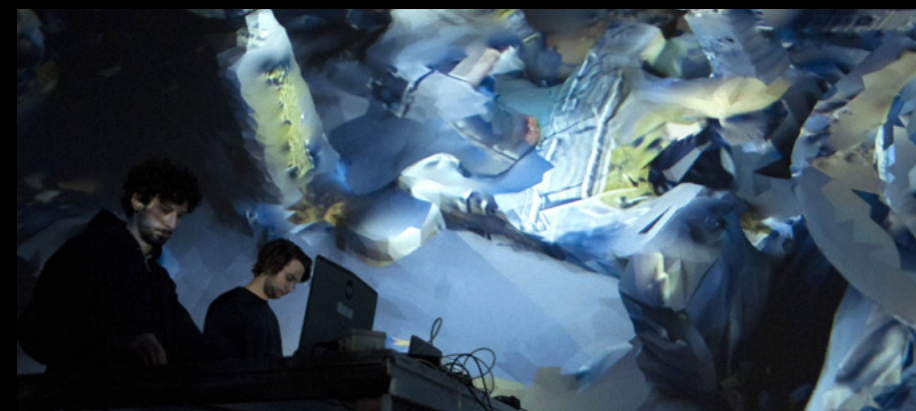
AUDIOVISUAL PERFORMANCE - 30 MINUTES

The world, as it is shown to us by Google Earth, is intriguing... The shapes' imperfections, the textures' distortions, the suspended time, are all attributes of a new kind of universe, an hybrid one, looking more like an algorithmic fiction than our tangible reality. Earthsatz tries to amplify the cold and oppressive poetry generated by this « pocket world », where life doesn't exist and particules are replaced by pixels. Maybe we should try to contemplate it for what it really is : a fictional universe that mimics the one we are living in, developing its own autonomy.

With photogrammetry, we scanned some parts of the Google-generated world. We built 3D landscapes from them and tried to highlight their surreal characteristics, playing with mysterious lights, impossible distortions and moving points of view. Earthatz is a ride in this corrupted world, celebrating all its fictional, artificial and irrational aspects. As the landscapes are desintegrating and recomposing themselves, their roars are embodied in distorted and mechanical sounds. These heavy synth pads extend the figurative universe, being its intense echo in the spectator's perceptual space.

Each representation of Earthsatz integrates new landscapes, results of scans of Google Earth parcels near the place we are playing in (building hosting the performance, monuments or streets of the city, etc.).

Extracts : <https://vimeo.com/382961283>





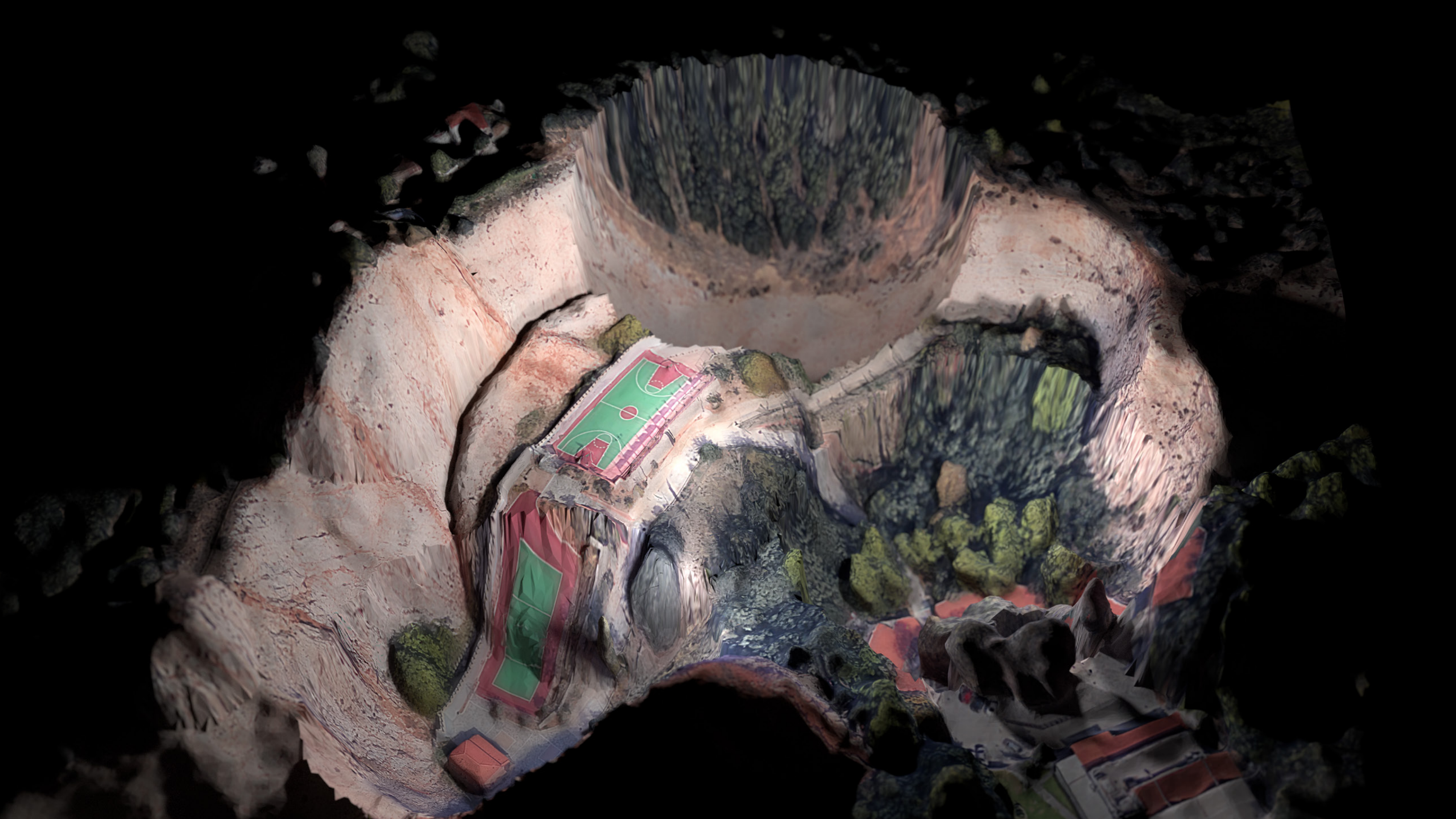




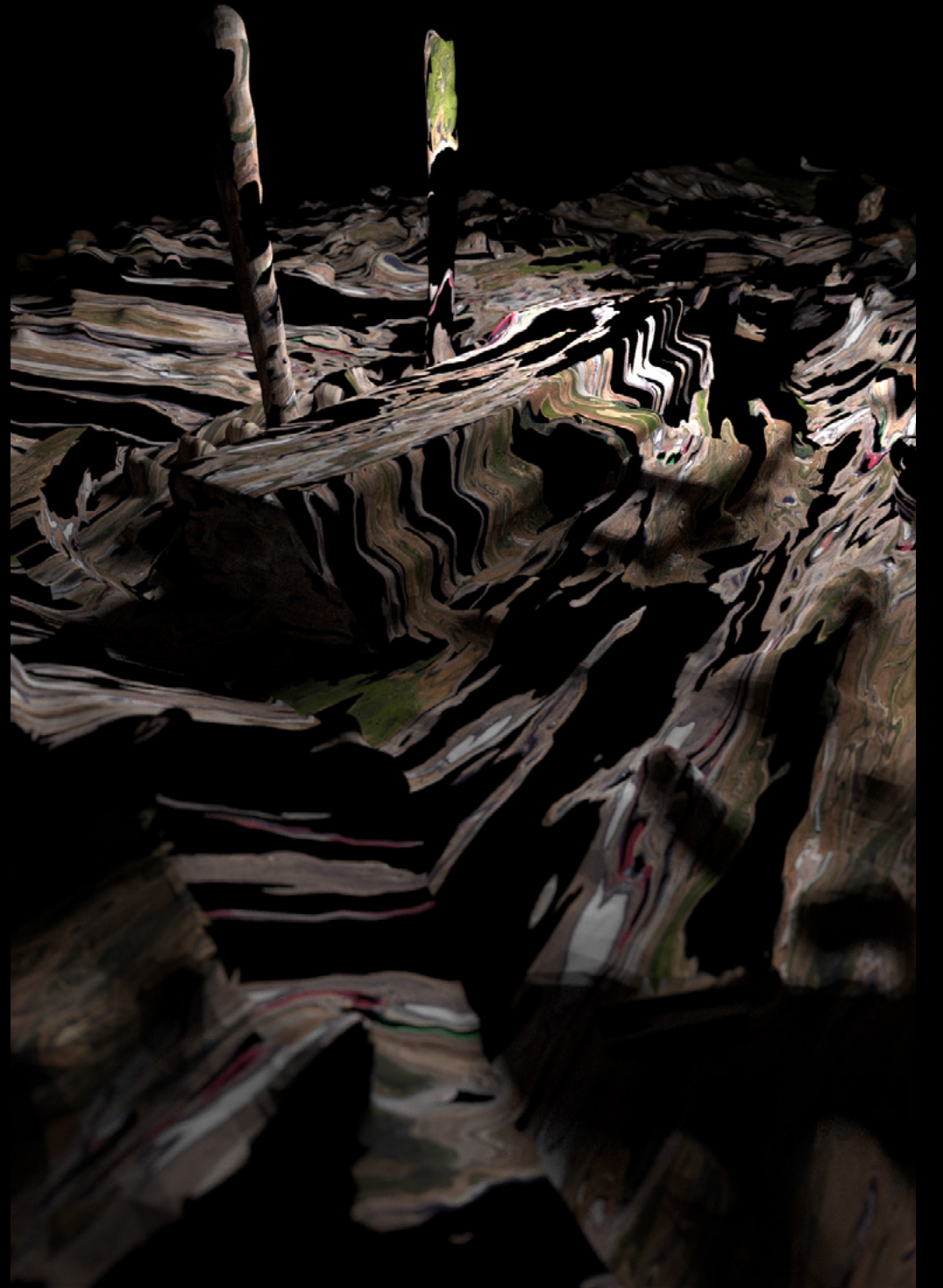














## **Contact**

**Dylan Cote**

06 67 28 10 65

[dcotecol@protonmail.com](mailto:dcotecol@protonmail.com)

[www.dylancote.fr](http://www.dylancote.fr)

**Pierre Lafanechère**

06 37 58 88 77

[pierrelafanechere@protonmail.com](mailto:pierrelafanechere@protonmail.com)

[www.incogito.fr](http://www.incogito.fr)