



contact +33 (0)7 69 54 71 93
gb@lacri.net

A#3-MOTU (VR)- TECHNICAL RIDER

MATERIAL BROUGHT BY LA CRI

- 1 switch network
- connectors display/hdmi/USB
- 1 PC VR ready (proc i7 SSD 250Go RAM 16Go graphic card GTX10870/1080)
- 1 KIT HTC VIVE (headset, controllers...)
- wooden parquet board (10m2)
- 8 m steel wire

REQUIEREMENT

SPACE AND MATERIAL :

- space 5X5 m
- 1 PC VR ready (proc i7 SSD 250Go RAM 16Go graphic card GTX10870/1080)
- 1 KIT HTC VIVE (headset, controllers...)
- 2 audio headset
- 2 monitors 40 inch with stand
- 2 keyboards+ 2 mouses
- 1 tables
- 2 chairs
- 2 black security furniture for the computers
- 2 Spot Light
- 2 feet for light

INSTALLATION :

The artist and the ingeneer need 2 days to install the all material of A#3-MOTU in the space.

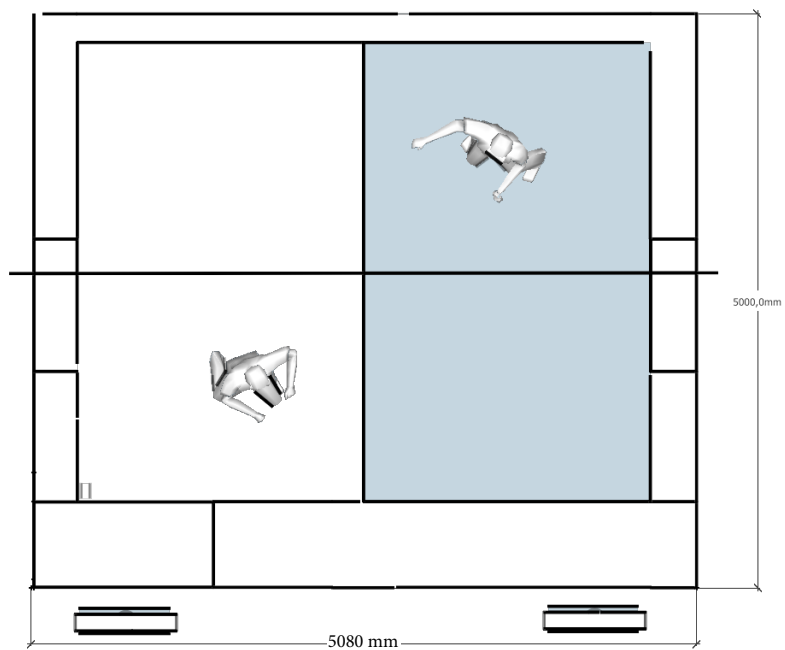
EXHIBITION :

A#3-MOTU need 1 mediator during the all exhibition.

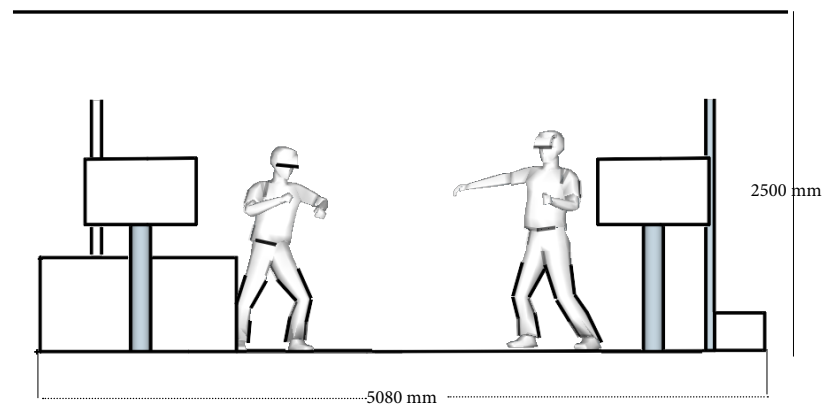


PLAN
A#3-MOTU (pilote)
contact +33 (0)7 69 54 71 93
gb@lacri.net

Top view



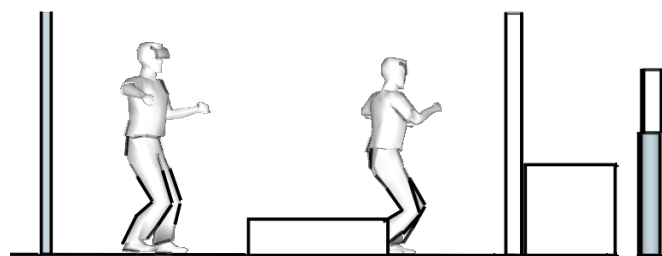
Front view



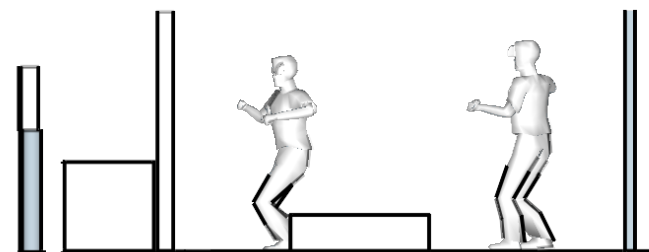


PLAN
A#3-MOTU (pilote)
contact +33 (0)7 69 54 71 93
gb@lacri.net

Left profile



Right profile





PLAN
A#3-MOTU (pilote)
contact +33 (0)7 69 54 71 93
gb@lacri.net

Perspective view

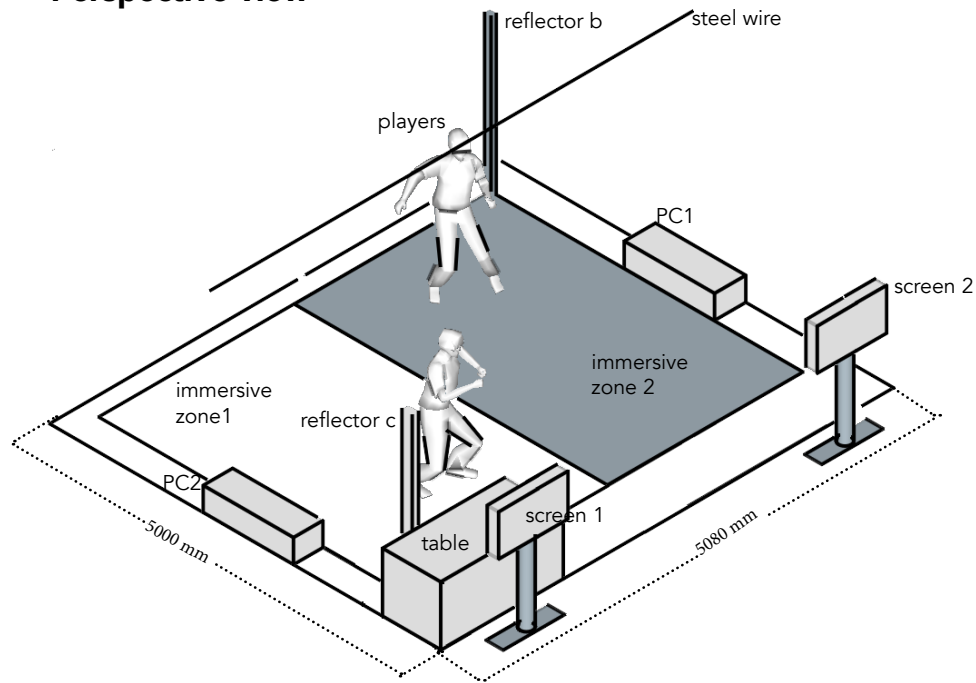


Photo of A#3-MOTU for the european Heritage Day at the Hôtel des Arts of Toulon (sept 2018)

