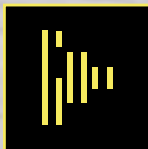


GOH OPEN-AIR SOUND FICTIONS



GOH by
Les Ensembles 2.2



IN THE FIELD SOUNDWALKS - ESCH2022

In the field are 6 open-air sound fictions created within the framework of Esch2022, European Capital of Culture and available on the French-Luxembourg border.

The soundwalks are available

- for free
- until December 2023
- 24/7

The cities in France and Luxembourg
where the *In the field* soundwalks are located:

LASAUVAGE

LaSauvage

Steve Toase & Eric Holm

#weird #legend

THIL

The mine is a maw

La mine est une bouche

Marina Skalova & Jacob Kirkegaard

#poetry #memory

VILLERUPT

The Unseen Seasons

Les Saisons Invisibles

Hélène Gaudy & Christina Kubisch

#documentary #vestiges

GOH - OPEN-AIR SOUND FICTIONS

Open-air sound fictions are soundwalks combining original texts and musical compositions. They offer an original and interactive experience, by immersing you in a story that can be discovered during a walk.

The sound fictions are available on your smartphone, by downloading the GOH mobile app. The routes are geolocated, in order to bring the stories to life directly in the landscape that surrounds you. **Music, poetry, literature, tales and legends, and much more to discover in your area.**

KAYL/SCHIFFLANGE

Ruby

Iuvan & Charo Calvo

#sciencefiction #radioastronomy

ESCH-SUR-ALZETTE

Acid Reine Cie

Sebastian Dicenaire & Svië

#sciencefiction #data

AUDUN-LE-TICHE

La Borne de Fer

Matthieu Epp & Svië

#fantasy #quest

La Borne de Fer

10+ | 1h

Let yourself be guided through the *Borne de Fer* forest by the inventor of a «sound emission zone detector». Your goal: to discover what has been hidden in the woods since Roman times, by finding the fragments of stories that are scattered around.

📍 Site of the Borne de Fer, Audun-le-Tiche

Acid Reine Cie.

10+ | 30 - 45 mn

An innovative company offers to recycle your digital data into an almost unlimited green energy. But this success is tinged with mystery: of the two founders of the company, one went mad, and the other disappeared in unexplained circumstances...

📍 8 Porte de France, Belval, Esch-sur-Alzette

Ruby

10+ | 60 - 90 mn

The red earth, the ancient plants, the view over Belval, the remains of the mines... *Ruby* immerses you in a science fiction atmosphere inspired by the scenery surrounding you, and brings you to meet the radio astronomer Ruby Payne-Scott.

📍 Jean Jacoby stadium's parking, Schifflange

LaSauvage

12+ | 45 - 60 mn

LaSauvage is inspired by local folk tales and by the history of the iron industry in the region. The common thread here is the legend of La Femme Sauvage, from which the village takes its name: a mysterious woman living in the surrounding woods, sometimes a healer, sometimes a witch.

📍 Lasauvage, Differdange

The mine is a maw

16+ | 30 - 45 mn

The mine is a maw takes you into the dark depths of the Tiercelet mines in Thil, where, during the Second World War, Jewish deportees and Soviet resistance fighters were subjected to forced labour by the Nazis.

📍 In front of the Tiercelet mines, Thil

The Unseen Seasons

12+ | 60 - 90 mn

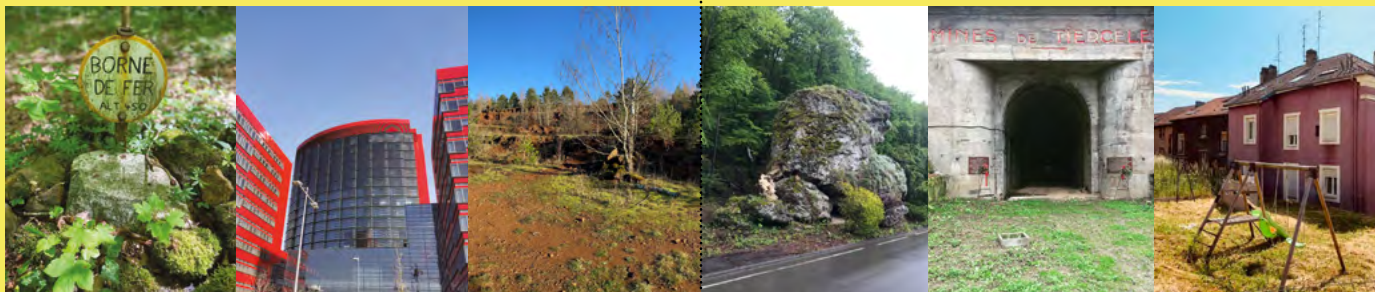
The Unseen Seasons is inspired by the history of Villerupt and its region: the landscape shaped by the mines, the emptiness that remains. It is an image of the people, of the successive waves of immigration; but also of the territory, of the nearby borders.

📍 Jeanne d'Arc Square, Villerupt

© Steve Toase

© Jacob Kirkegard

© Hélène Gaudy



AS PART OF



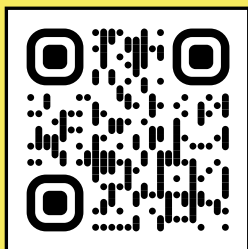
ESCH-SUR-ALZETTE
EUROPEAN CAPITAL
OF CULTURE

Production Les Ensembles 2.2 **Supports** Ministry of Cultural Affairs of France, DRAC Grand Est, Grand Est Region, National Center for Music (CNM), Collectivité Européenne d'Alsace, Meurthe-et-Moselle Department, the City of Esch-sur-Alzette, the City and Eurometropolis of Strasbourg **Partnership** Luxembourg Institute of Socio-Economic Research, Residhome Luxembourg, Cottage Luxembourg.

Download GOH

*Find soundwalks
near you.*

*Immerse yourself
in an open-air sound
fiction!*



How to start a soundwalk?

- Download the GOH app
(on the AppStore or Play Store)
- Open the app
- Select the soundwalk*
(the one closest to you is displayed first)
- Head to one of the bubbles shown on the map
(if you are too far from the starting point,
the app will guide you there!)
- Put on your headphones
- Start listening

* You can download your soundwalks in advance to listen to them offline.

©2022 - Les Ensembles 2.2 - Cover: Philippe Stirnweiss -
Graphic design: Atelier Sarah Lang - Printing: A.Geiger Illkirch -
Do not throw away on the street.